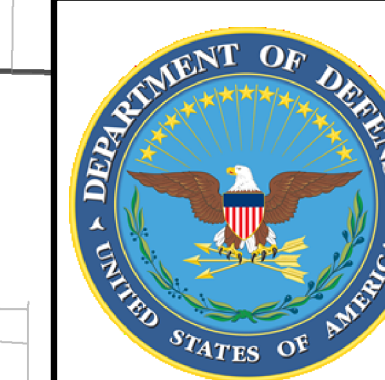


Eglin Air Force Base, Florida

2023 - 2024 Outdoor Recreation, Hunting and Freshwater Fishing Map



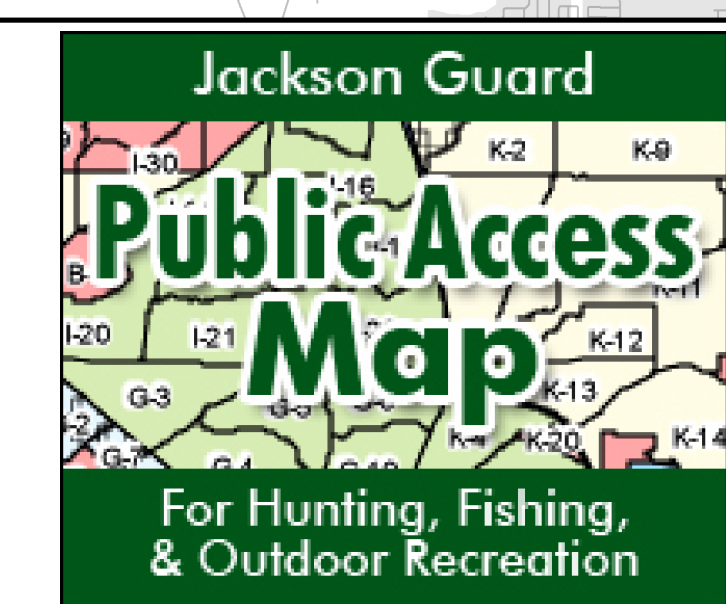
JEFFREY T. GERAGHTY, Brig Gen, USAF
Commander, 96th Test Wing

This map was developed for general planning purposes and is not intended to define the legal description of military property or airspace. The United States Air Force is not responsible for any discrepancies which may exist on this map.

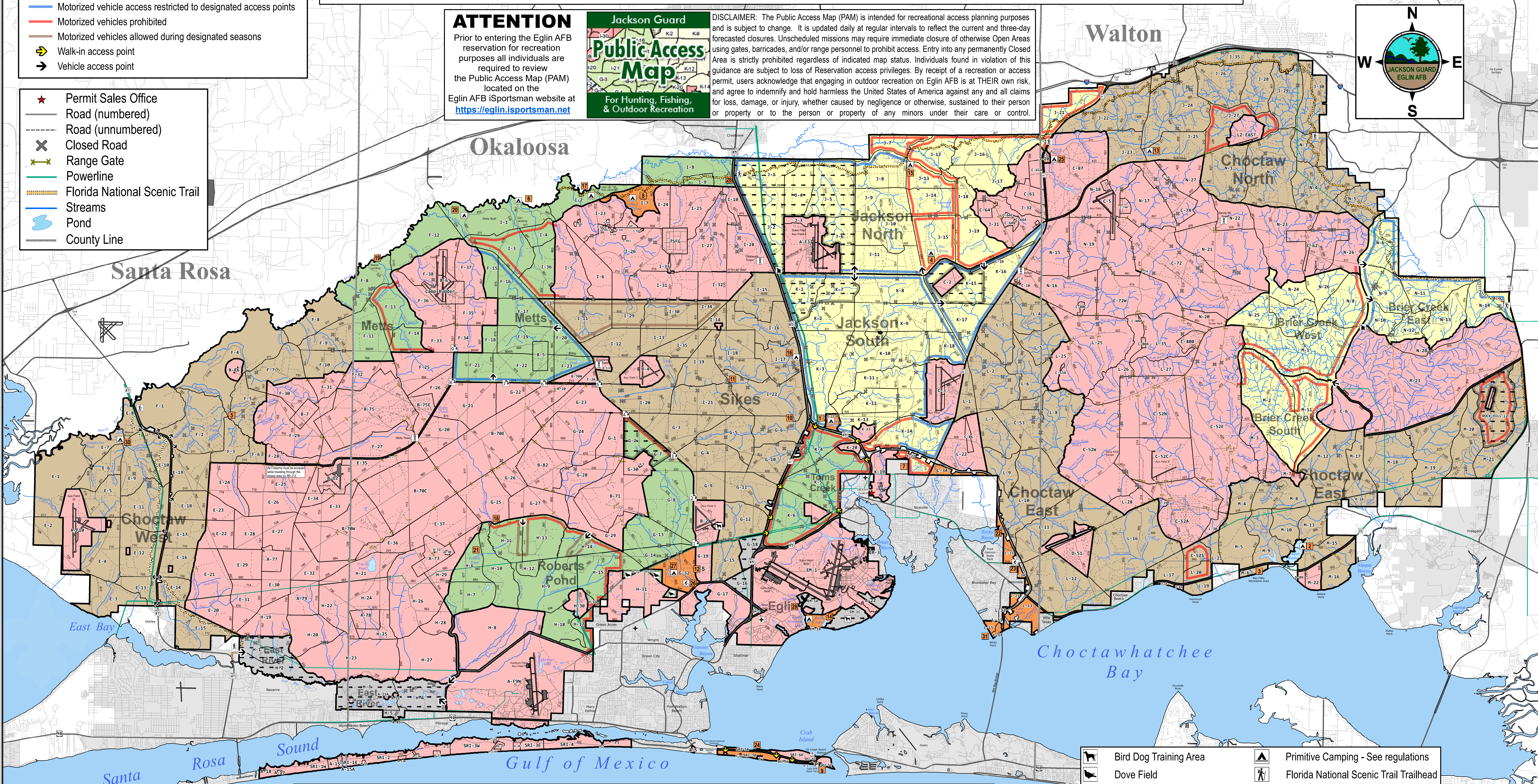
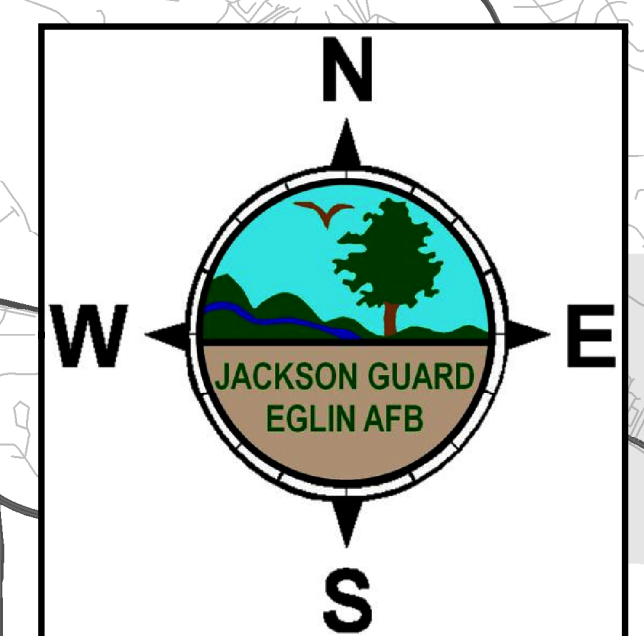
- ### Legend
- Closed to all public access
 - See specific management unit regulations
 - Metts, Roberts Pond and Toms Creek management units
 - Choctaw and Sikes management units
 - Jackson and Brier Creek management units
 - East River and Eglin management units
 - Recreation Area: Closed to hunting
 - Archery Area
 - Motorized vehicle access restricted to designated access points
 - Motorized vehicles prohibited
 - Motorized vehicles allowed during designated seasons
 - Walk-in access point
 - Vehicle access point

- ★ Permit Sales Office
- Road (numbered)
- Road (unnumbered)
- Closed Road
- Range Gate
- Powerline
- Florida National Scenic Trail
- Streams
- Pond
- County Line

ATTENTION
Prior to entering the Eglin AFB reservation for recreation purposes all individuals are required to review the Public Access Map (PAM) located on the Eglin AFB iSportsman website at <https://eglin.isportsman.net>

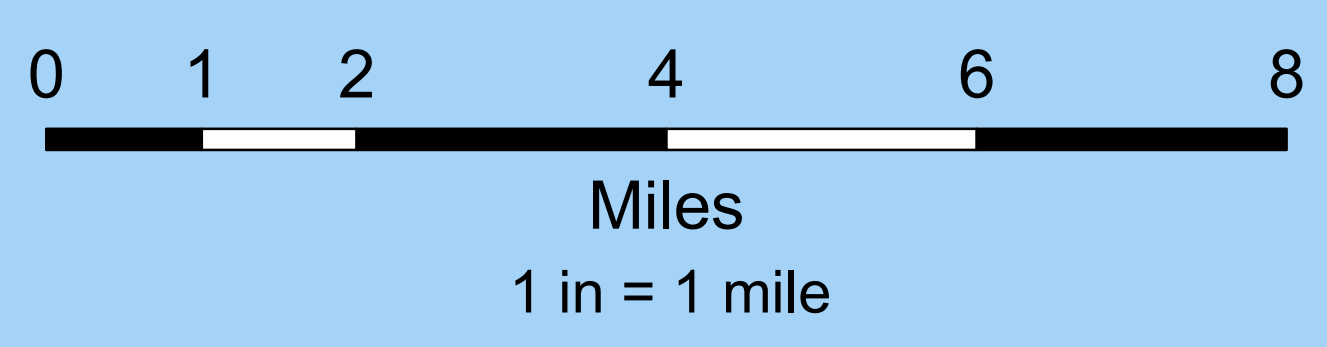


DISCLAIMER: The Public Access Map (PAM) is intended for recreational access planning purposes and is subject to change. It is updated daily at regular intervals to reflect the current and three-day forecasted closures. Unscheduled missions may require immediate closure of otherwise Open Areas using gates, barricades, and/or range personnel to prohibit access. Entry into any permanently Closed Area is strictly prohibited regardless of indicated map status. Individuals found in violation of this guidance are subject to loss of Reservation access privileges. By receipt of a recreation or access permit, users acknowledge that engaging in outdoor recreation on Eglin AFB is at THEIR own risk, and agree to indemnify and hold harmless the United States of America against any and all claims for loss, damage, or injury, whether caused by negligence or otherwise, sustained to their person or property or to the person or property of any minors under their care or control.



- ### Recreation Areas
- | | | | |
|--|---|--|--|
| 1 Anderson Pond | 7 College Pond | 13 Indigo Pond | 19 Mason Landing |
| 2 Basin Bayou East | 8 Duck Pond | 14 Jacks Lake | 20 Metts Bluff |
| 3 Bay Flats | 9 Eglin Beach Park | 15 Jr. Walton Pond | 21 Roberts Pond |
| 4 Blue Springs | 10 Goodin Bridge | 16 Kepner Primitive Campsite | 22 Rocky Creek |
| 5 Boiling Creek | 11 Hippie Hole | 17 Little Gin Hole | 23 Rocky Creek MBA |
| 6 Carr Landing | 12 Hurlburt Skeet Range | 18 Live Oak Creek | 24 Santa Rosa Beach Access |
| | | | 25 Speck Pond |
| | | | 26 Timberlake MBA |
| | | | 27 Timberlake Pond |
| | | | 28 Turkey Hen Flats |
| | | | 29 Upper & Lower Memorial |
| | | | 30 Weaver River |
| | | | 31 White Point |

- 🐕 Bird Dog Training Area
- 🐦 Dove Field
- 🔍 Game Check Station
- S Hurlburt Skeet Range
- + Hospital
- ⛺ Primitive Camping - See regulations
- 🚶 Florida National Scenic Trail Trailhead
- 🚲 Mountain Bike Area (MBA)
- P Designated Parking Areas See Santa Rosa Island regulations
- ☎ Emergency 911 Call Box



Please report illegal or suspicious activity and all motor vehicle accidents to the 96th Security Forces Squadron at (850) 882-2000. Boating, fishing, or hunting violations should be reported to the Florida Fish & Wildlife Conservation Commission at (888) 404-3922 or the U.S. Fish & Wildlife Service Tip line at (844) FWS-TIPS. To report a wildfire, call the Eglin Fire Department at (850) 882-5856.